

# Art & History in Modern China

---

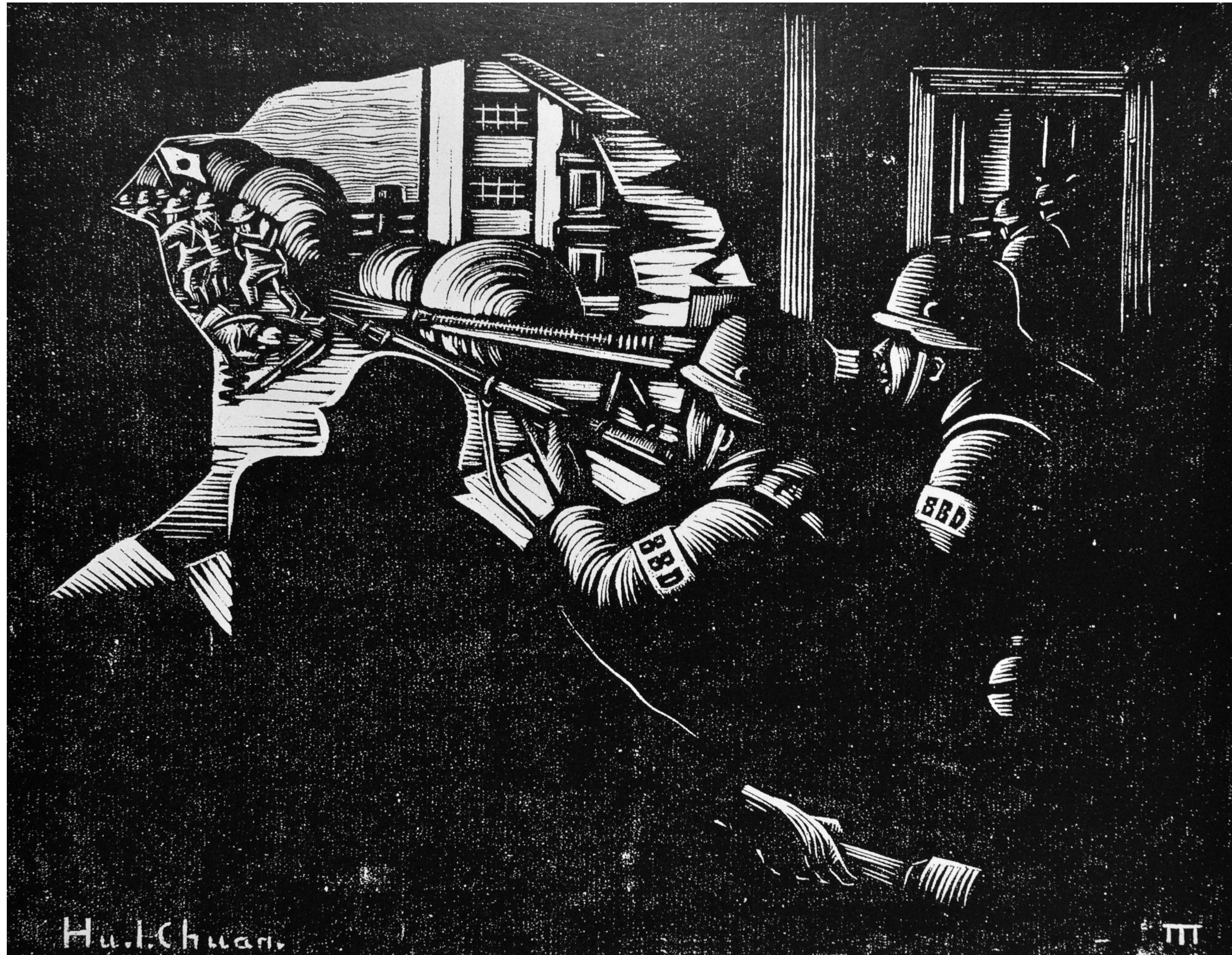
World War to 1941





Tang Yihe (1905–1944)  
*The Trumpet Call of July 7 (1937) [1940]\**





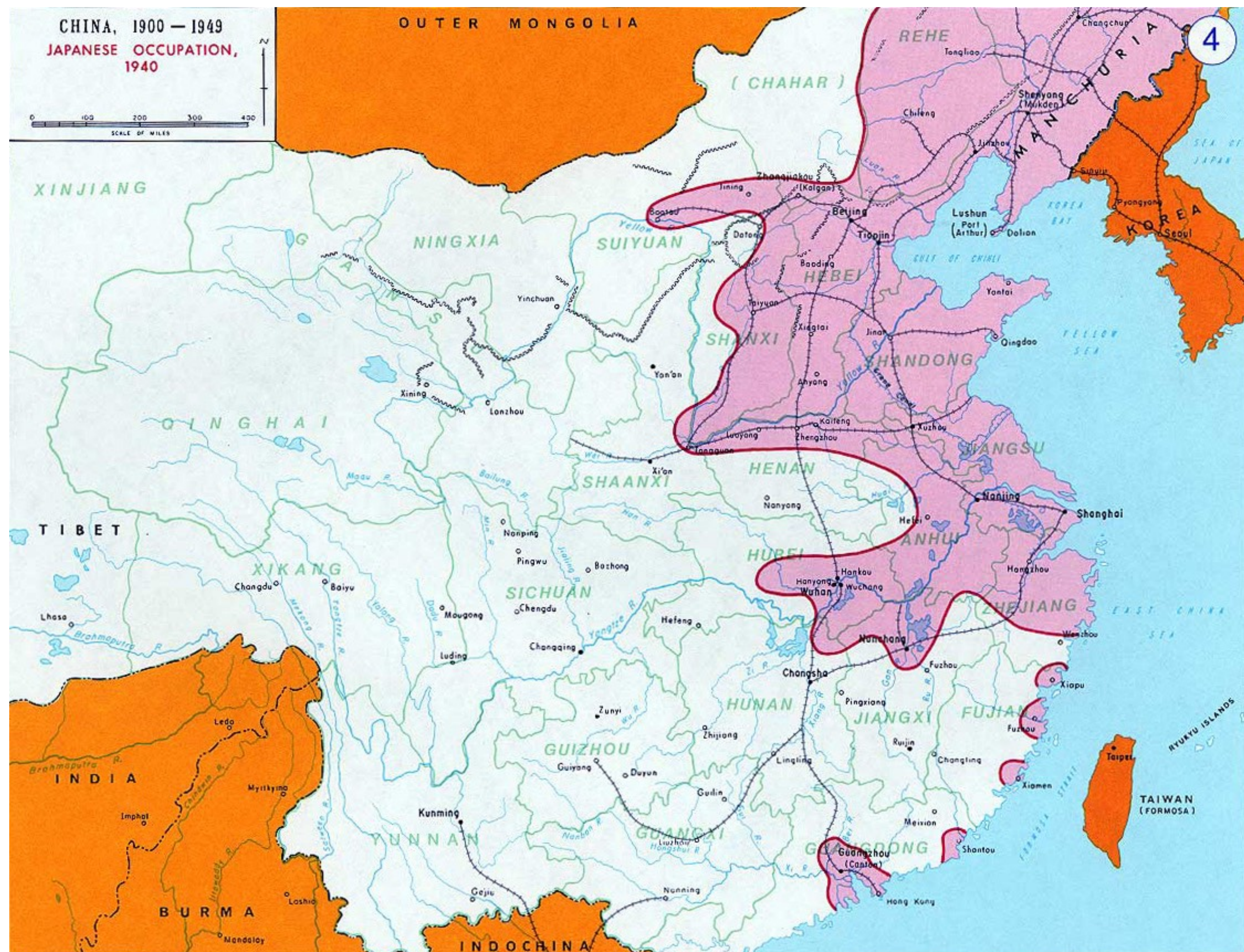
Hu Yichuan (1910–2000), *Brave Soldiers of the 88th Division* [1938]



103 Wang Xiaoting,  
orphaned baby crying in  
the Shanghai South  
Railroad Station during a  
Japanese bombing raid,  
28 August 1937, film still.











Liu Xian (1915–1990)

*Consolidate Our Unity, Fight the Japanese Aggressors to the End!* [1938]\*





**KEY TO MINERALS**

Sb - Antimony	C - Coal	Pb - Lead	Hg - Mercury
Cu - Copper	Fe - Iron	Su - Tin	W - Tungsten

**MIGRATION OF CHINESE UNIVERSITIES**

Since July, 1937, thirty Chinese universities have traveled an average of 700 miles each

China Sea

# China from the East

CHINA, from the standpoint of internal communication, is one of the least developed of the great nations. Even before the fall of Allied areas in the Pacific limited her to a tenuous supply line across Sinkiang and to a hazardous air route along the Himalayas, her only coastal supply centers, besides Rangoon, were the small smuggling ports indicated on the map by blue arrows. These were linked to Free China by the system of roads, rivers, footpaths, and railroads outlined in blue.



# KEY TO MINERALS

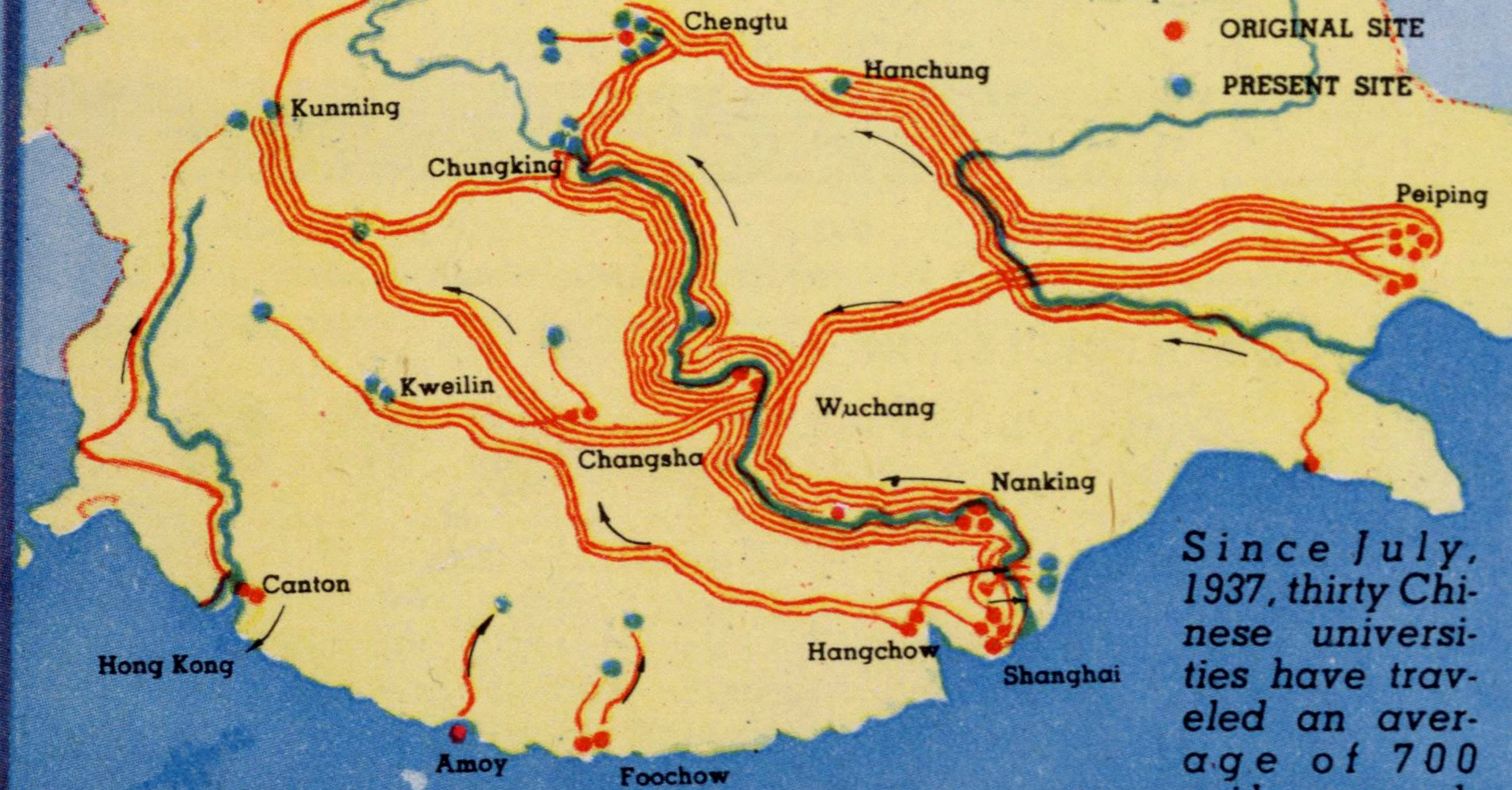
Sb - Antimony  
Cu - Copper

C - Coal  
Fe - Iron

Pb - Lead  
Sn - Tin

Hg - Mercury  
W - Tungsten

## MIGRATION OF CHINESE UNIVERSITIES



Since July, 1937, thirty Chinese universities have traveled an average of 700 miles each





[102] Dong Xiwen, 'Kazakh herding women', 1948,  
oil on canvas, 161 x 126 cm,  
Collection of the National Art Museum of China (NAMOC)

Dong Xiwen (1914–1973)  
*Kazakh Herdswoman*  
[1948]\*













Chang Shuhong (1904–1994)  
*Thunder Throughout the Land*  
[1939]\*





Chang Shuhong (1904–1994)  
*Beginnings of Copying Murals* [Dunhuang, 1944]





Mogao Caves, Dunhuang, Gansu (active 366–1368)









Zhang Daqian (1899–1983)  
[Dunhuang, 1942]







Zhang Daqian (1899–1983)  
*Red Lotus* [1947]\*



Painted in the fifth month, summer of the year Yiyou [1945], at the mountain studio on the slope of Jin'ganpo in Dongchuan [Sichuan].



Fu Baoshi (1904–1965)  
*Rain at Dusk* [1945]\*





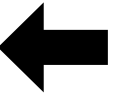
*Shi Le Seeking the Way* [1945]





*Mountain Spirit* [1946]





Ding Cong (1916–2009), *Images of Today* [1944]\*









First anniversary of Wang Jingwei's government [Nanjing, April 28, 1941]









19.1 View of Yan'an in the 1940s

Yan'an,  
Shaanxi





[1935]





[1935]





[1937]





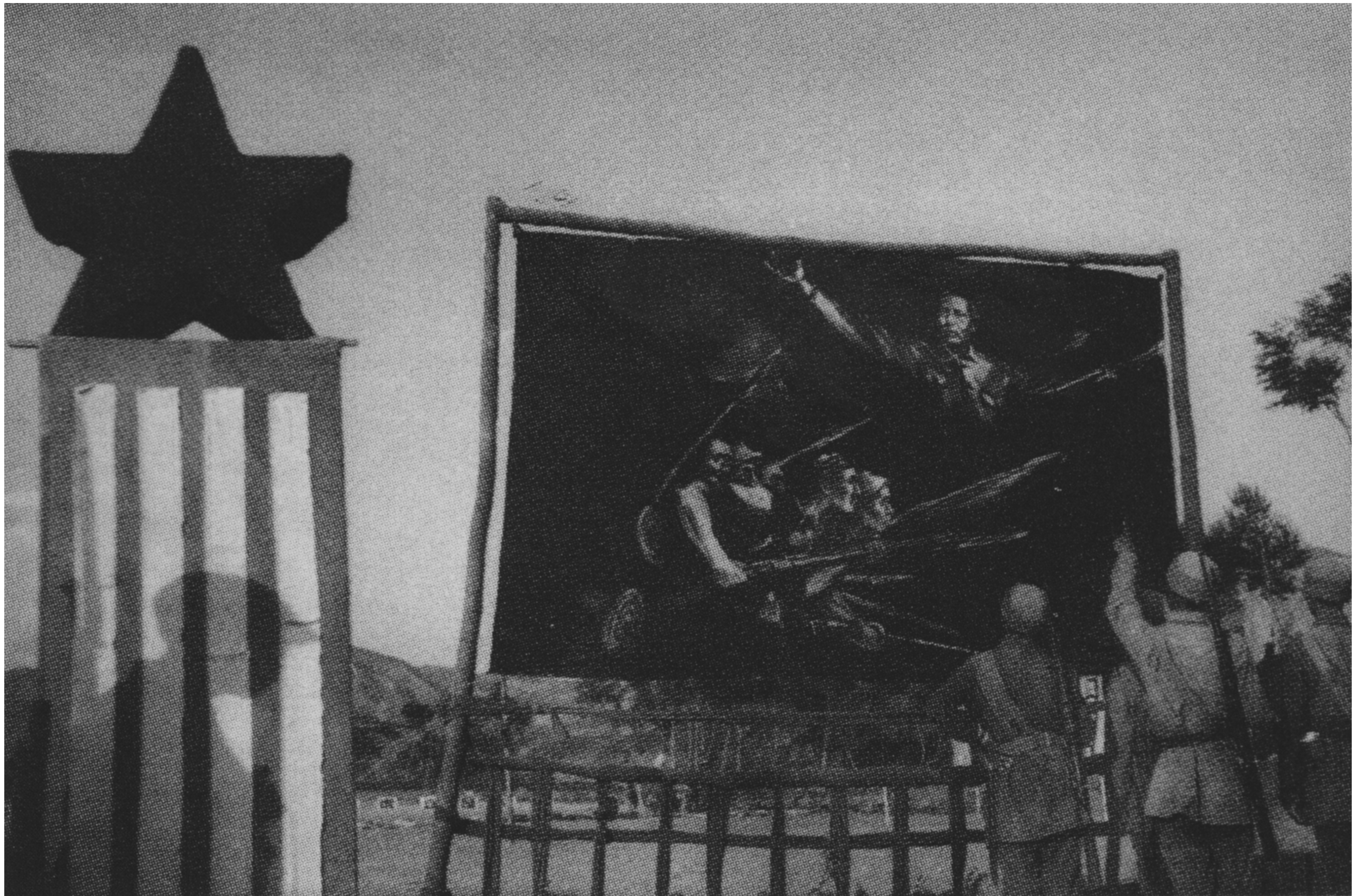
[1938]





[1938]





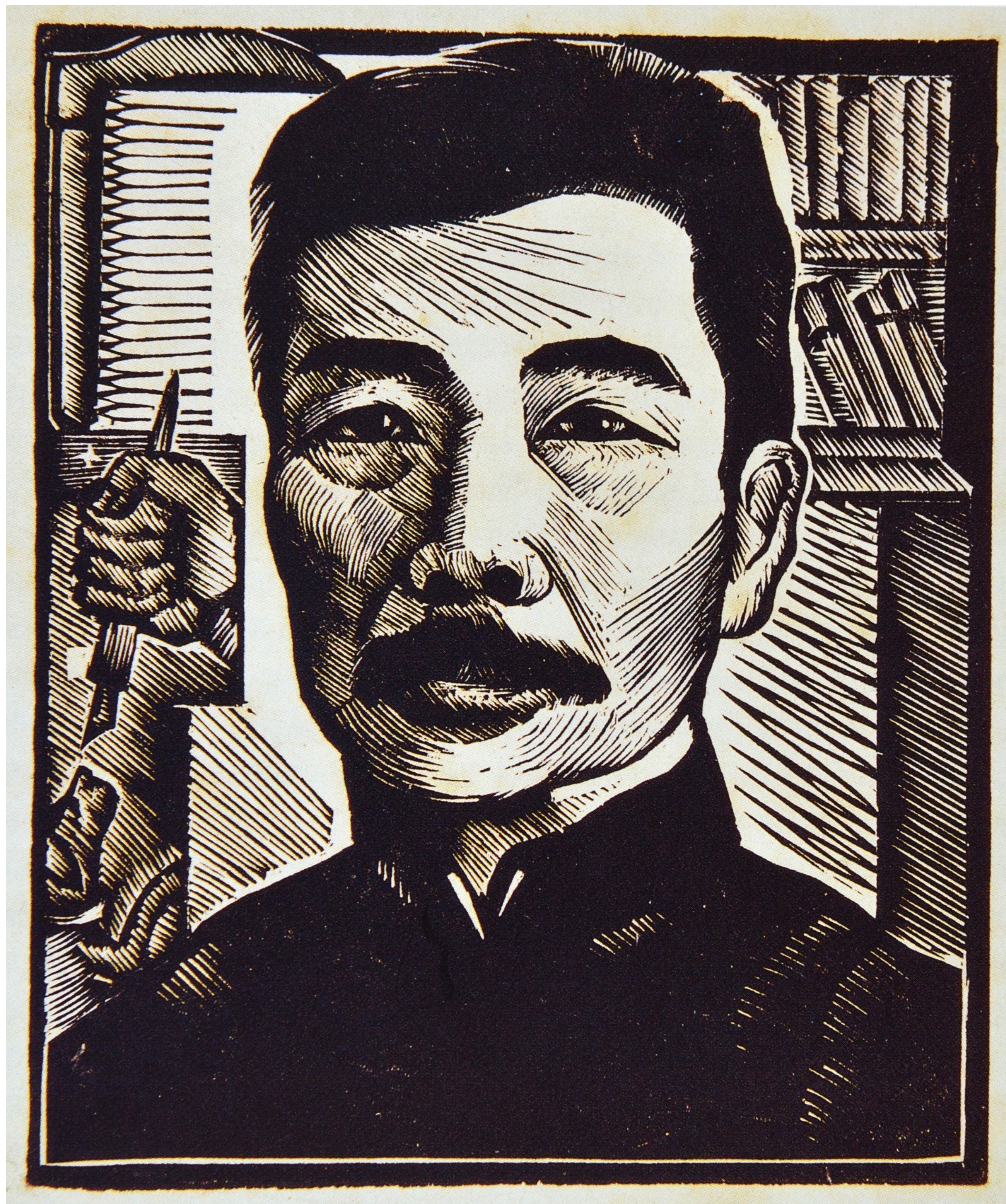
[1938]





Wang Zhanfei (1911–2013)  
Cover of *Lu Xun Art Academy  
Journal*, vol. 2, no. 1  
[Yan'an, January 1941]





Li Qun (1912–2012),  
*Lu Xun* [1937]





Yan Han (1916–2011)  
*New Year Door Guardian (Cooperation  
Between the Army and the People)*  
[ca. 1940]\*





*(Cooperation Between the Army and the People; Brings Victory in the War of Resistance)*





Gu Yuan (1919–1996), *New Year Door Guardians*  
(*Pay Attention to Hygiene and People Will Flourish and Prosper*) [1943]