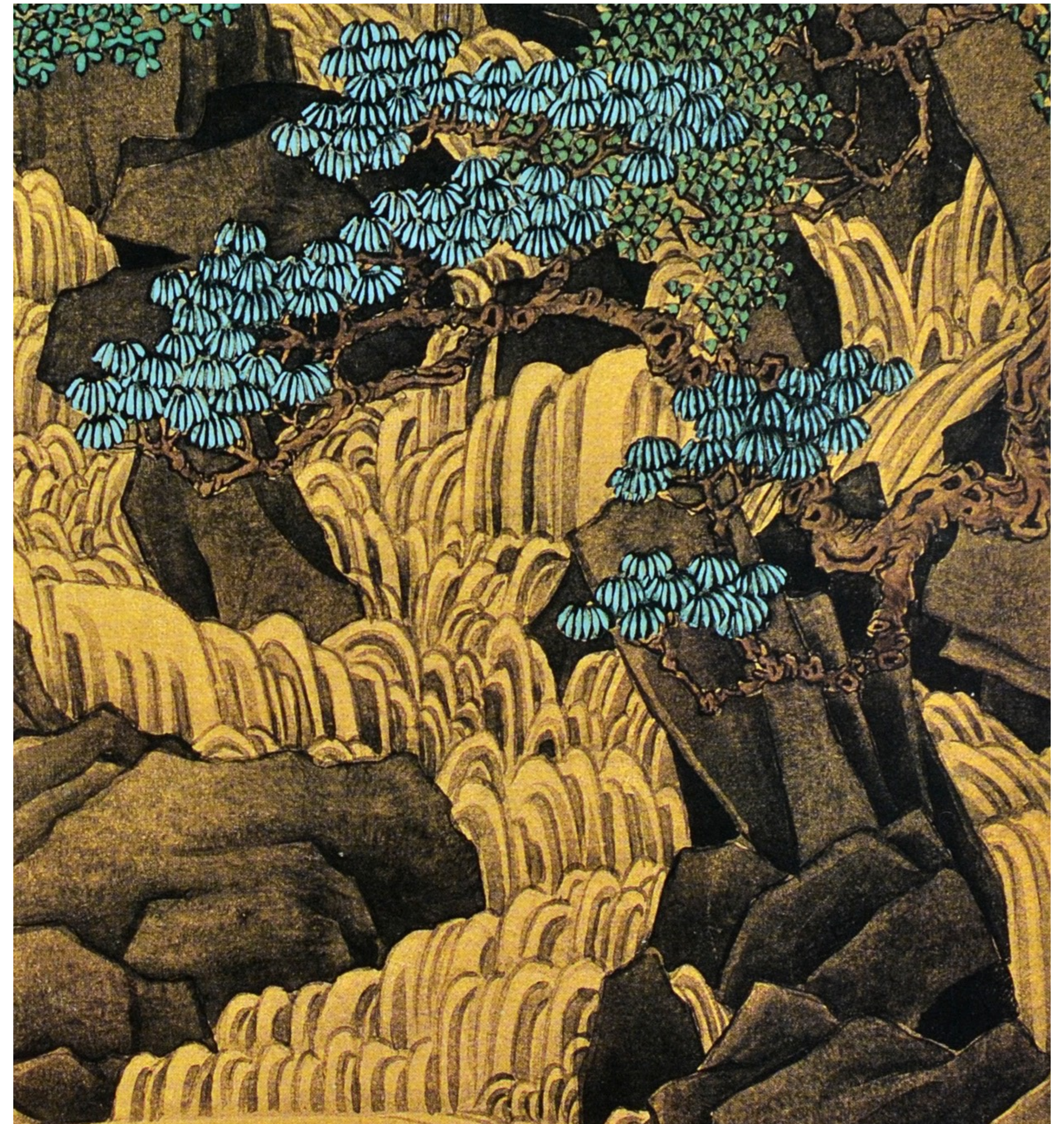


Art & History in Modern China

Traditional Painting & Calligraphy, 1850–1915



Ren Xiong 任熊 (1823–1857)
Self-portrait [ca. 1855]*



*The Ten Myriads album [ca. 1856]**
Myriad Valleys with Contending Streams [萬壑爭流]



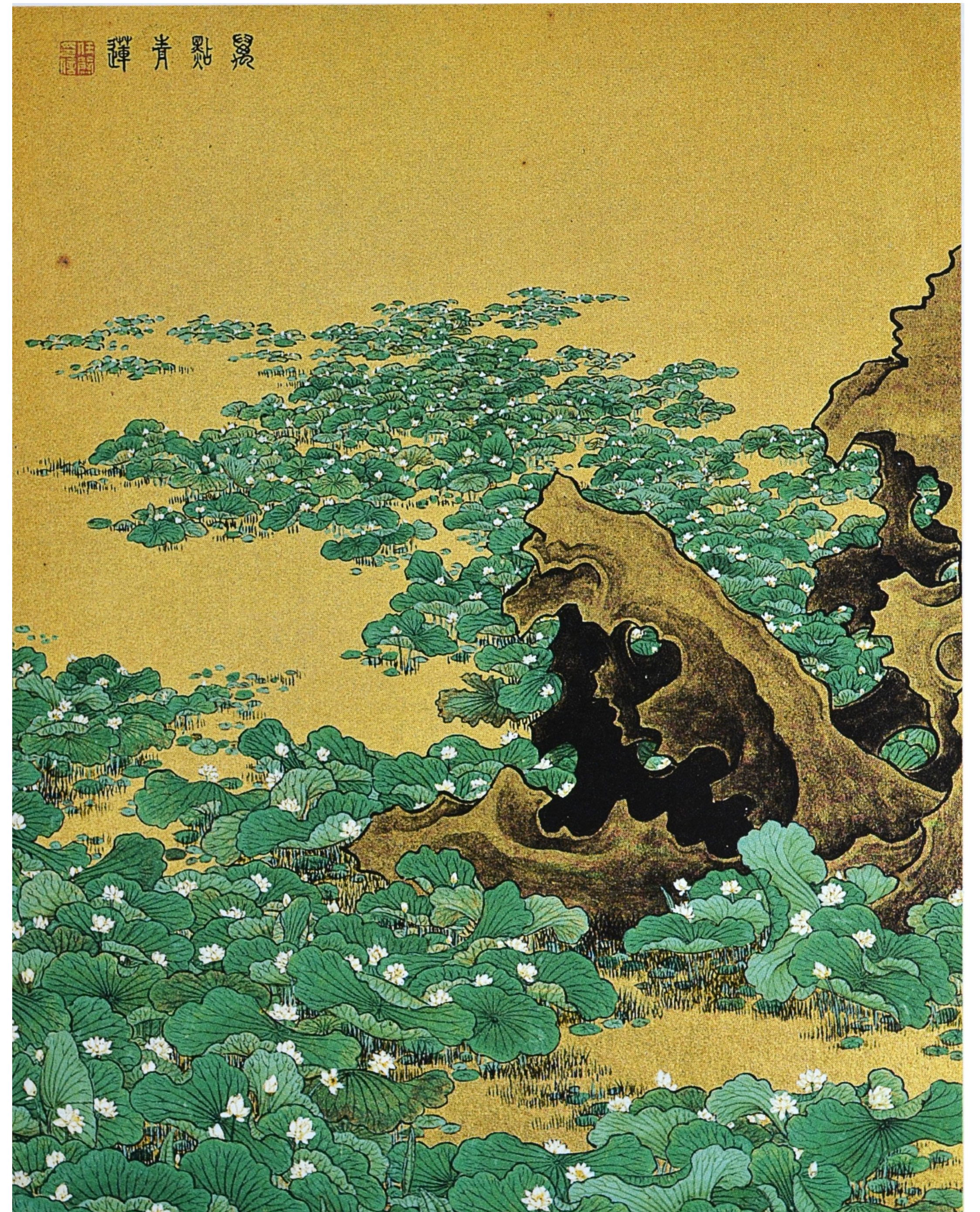
萬笏朝雨



萬峰飛雪



萬林秋色



萬點青蓮



萬橫香雪



萬丈空流



萬竿煙雨



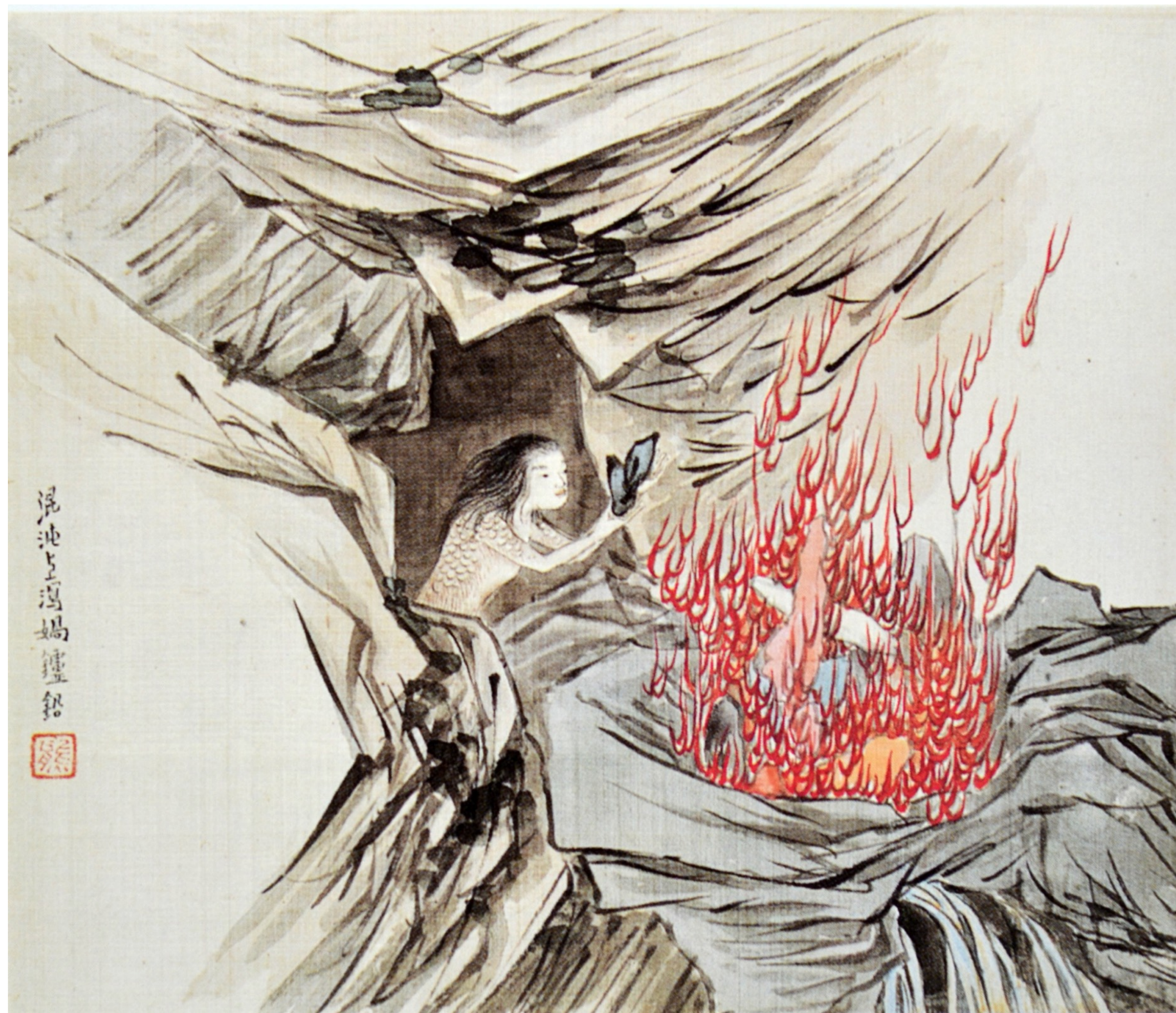
萬卷詩樓



*Album after the Poems of Yao Xie [1851-52]**



Myth and Religion



Myth and Religion



Drinking Cards with Illustrations of the 48 Immortals [1854]



Tushanwan 土山灣 (Jesuit orphanage and workshops)





Ren Yi 任頤 (1840–1895)
Five Successful Sons [1877]*



*Album of Figures, Flowers, and Birds [1882]**





Portrait of the Shabby Official
(Portrait of Wu Changshi) [1888]*



In the Cool Shade of the Banana Tree (Portrait of Wu Changshi)
[1888]*



Wu Changshi 吳昌碩 (1844–1927)

肝段酒香淳游鯉鯉
止君子澤止澤又鯉其序
燮日與樂其鑿丘鮮黃日

其鯉又鯉又鯉其子如庚
止澤又澤其與可可
角鯉可乙庚止角楊又排

田車子庚鑿新既簡左
鑿又鑿鑿鑿乙鑿下鑿鑿
止陟宮車其廟亨可步及

庚豕子庚庚庚庚庚庚
增燮大止可人執而多及
庚燮君子直樂

右臨阮刻天一閣北京
本據錫文堂乙卯夏仲
安吉王三昌頌

Stone Drum Script [1914]*



Fragment of ink
rubbing taken from
the Stone Drums
(ca. 400 BCE)

Great-seal

下 馬 得 卿

Small-seal

下 馬 得 卿

Clerical

下 馬 得 卿

Draft

下 馬 得 卿

Regular

下 馬 得 卿

Action

下 馬 得 卿

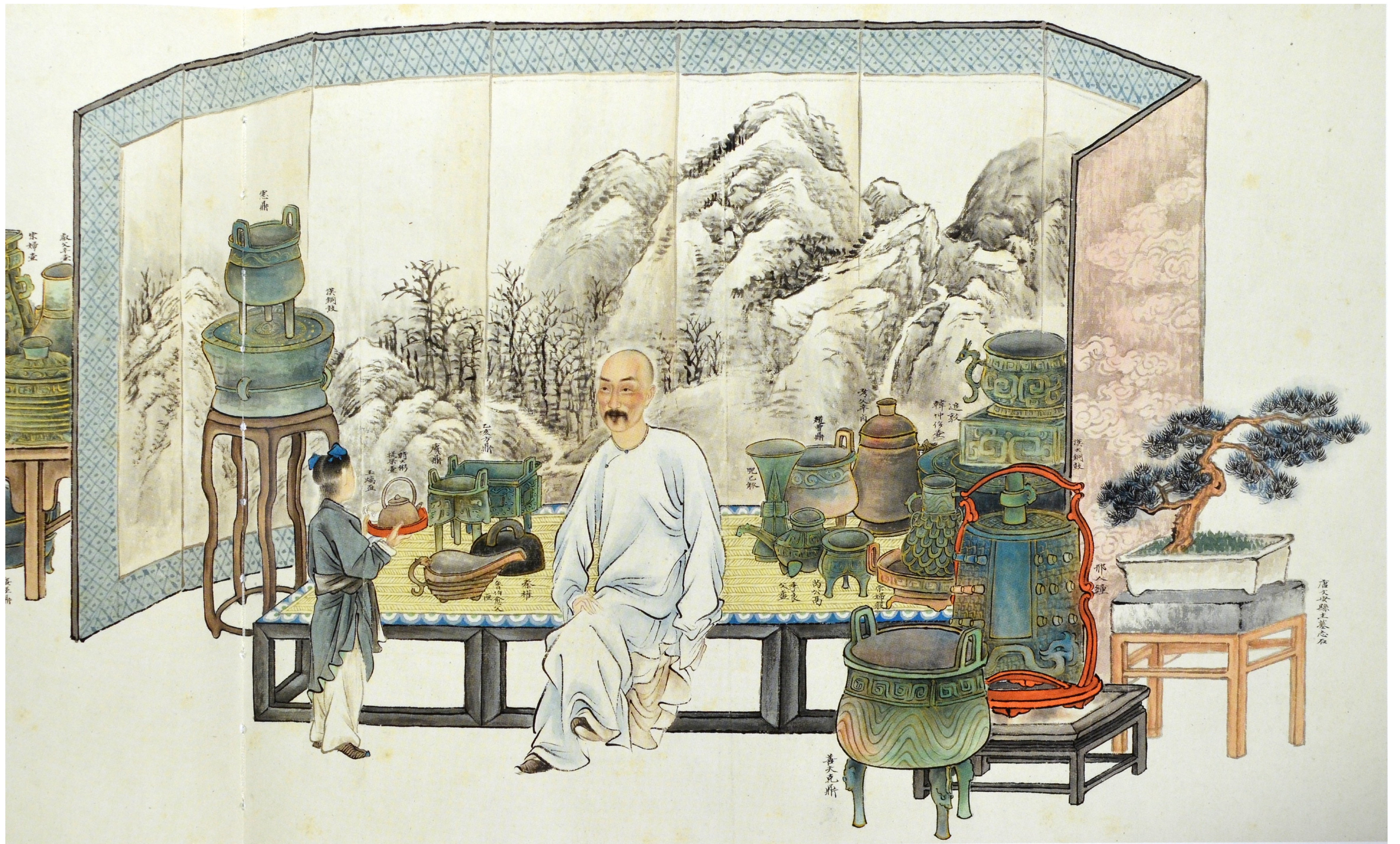


Two Bronze Ding Cauldrons [1902]



Ding (tripod)
From Zhou capital at Chang'an
Western Zhou dynasty, ca. 1000 BCE





[Portrait of Wu Dacheng (1835–1902)]



[Wu Changshi with Mizuno Sobai, 1918]



*Plum Blossoms
for Nagao Uzan
[1914]**



Wu Changshi seated in front of his statue shrine at the Xiling Seal Engraver's Society, Hangzhou [1926]

Phantom of the cursive script. Wu Changshuo from Anji at the raining window, in the middle summer [May] of the year Jiwei [1919], at the age of seventy-six.



1



2



3

Seal 1: Fou (relief character, square)

Seal 2: Changshuo (intaglio characters, square)

Seal 3: Foulu (intaglio characters, square)



Grapes [1919]



*Loquats and Wild Roses [1920]**